



## Percent selector for NOVOMATIC games

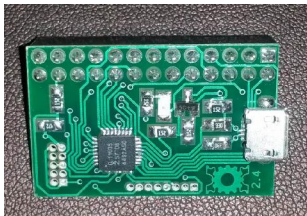
### USB 2014M

Board ver. - 2.4, BL version - 3.023, Main ver. - 2.113

#### Description main

1. Universal percent selector 2014M works with all games of Novomatic, on CoolFire I boards and their copies. It supports all mixes of Multi-Gaminator, Cobra, MegaKatok, HotSpot, HotSpot Platinum, Games4Y.
2. It can be simply installed into the cabinet, not need for init or clearing statistics.
3. It indicate when it working by red LED diod on pcb. It blinks every second wheels spin.
4. It allows to change parameters of correcting the percentage, using PC program when connect PS to USB. Support Win7(32/64bit).
5. Additional functions: log of all cabinet working time, different levels of time limits for rent organizing, possibility of blocking the cabinets on reset/power off.

#### Photos of selector

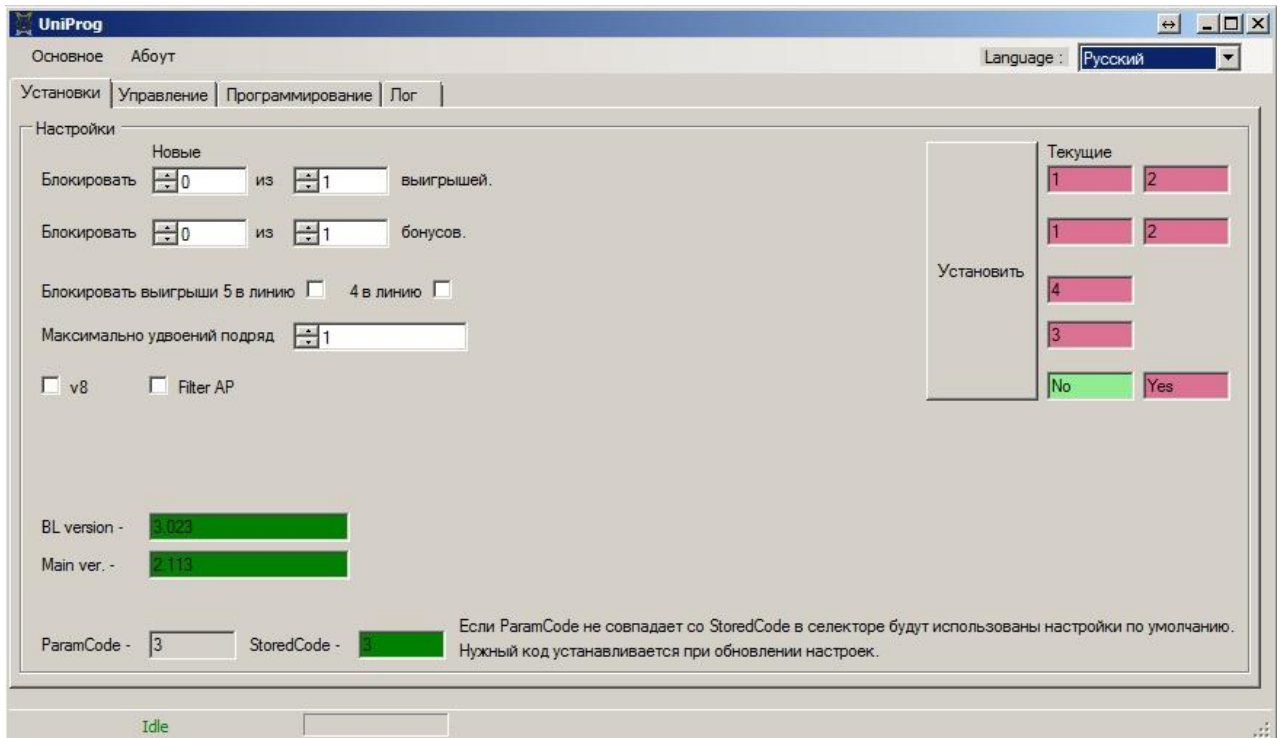


#### How to install PS 2014M into CoolFire I board

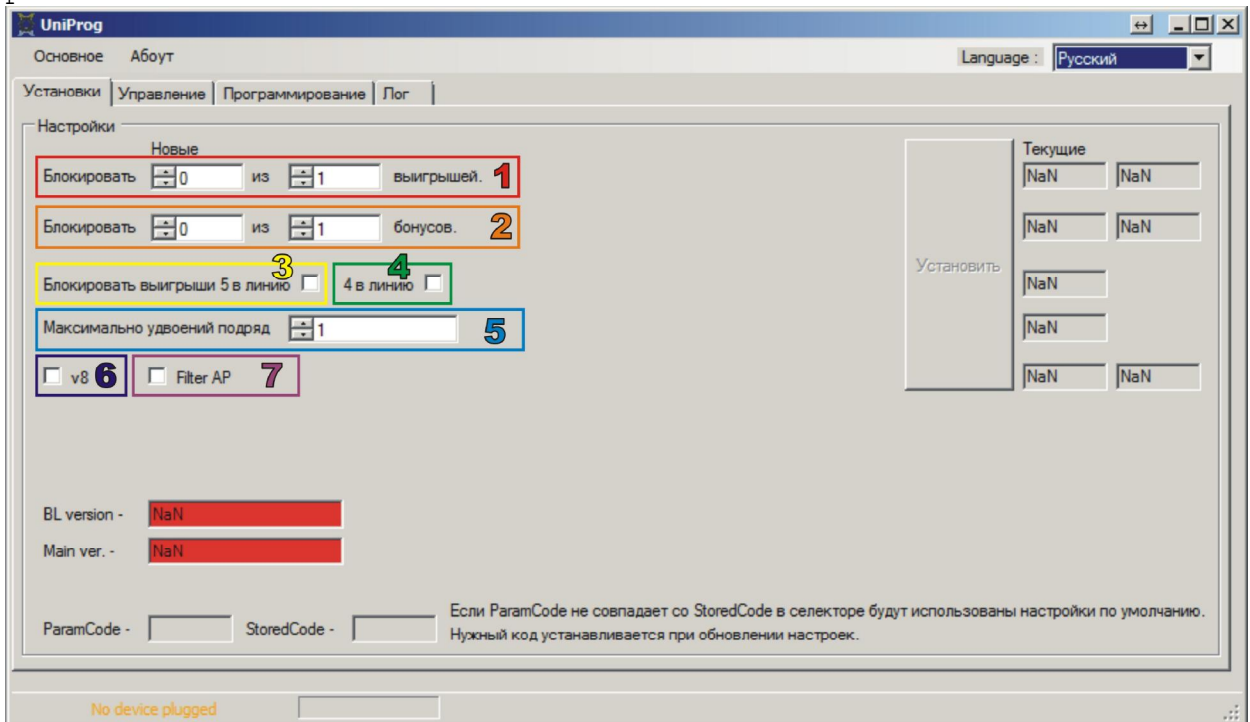


## Making settings when connect to USB PC

Connect PS2014M to USB on your PC by USB-to-microUSB cable, starting UniProg program before that. You can choose English, Russian or Poland language from list in top-right corner of the program. UniProg will read settings from PS and version of firmware: BL version - version of Boot loader 3.023, Main ver. - firmware flash version 2.113.



After reading settings and firmware versions, you can change parameters.



1. Make blocking of HiWin combinations on set lines. It sets, what quantity of combinations cut from combinations come.

For example, «Block 2 of 5 win combinations out» means, that every two wins from five wins come, will be blocked. Setup «2 of 4» is equal to «1 of 2».

2. Make blocking of HiWin combinations in bonus game. It sets, what quantity of combinations cut from combinations come.

For example, «Block 1 of 3 bonus combo out » means, that every win from five wins come, will be blocked.

3. Block 5 win symbols in line. Set parameter that win is 5 and 4 symbols.

4. Block 4 win symbols in line. Set parameter that win is 4 symbols.

5. Set the number of times doubling in a row in double-up game.

6. v8 - check this box on **mixes 5.8-8** and higher.

7. Filter AP - for correcting on American Poker **in mixes 5.6-xx (doesn't support American PokerII)**.

For change settings make changing all parameters and press SET button.

### **Approximate percentage when setting the percentage selector**

#### **60%**

Block «2» of «2» win combinations out.

Block «2» из «2» bonus combo out.

Block all "five in line combo" «CHECKED» 4 in line «CHECKED»

Maximum doubling in row «5»

#### **75%**

Block «2» of «2» win combinations out.

Block «2» из «2» bonus combo out.

Block all "five in line combo" «CHECKED» 4 in line « EMPTY »

Maximum doubling in row «5»

#### **80%**

Block «1» of «2» win combinations out.

Block «1» из «2» bonus combo out.

Block all "five in line combo" «CHECKED» 4 in line « EMPTY »

Maximum doubling in row «5»

#### **85%**

Block «1» of «3» win combinations out.

Block «1» из «2» bonus combo out.

Block all "five in line combo" «CHECKED» 4 in line « EMPTY »

Maximum doubling in row «5»

#### **90%**

Block «1» of «3» win combinations out.

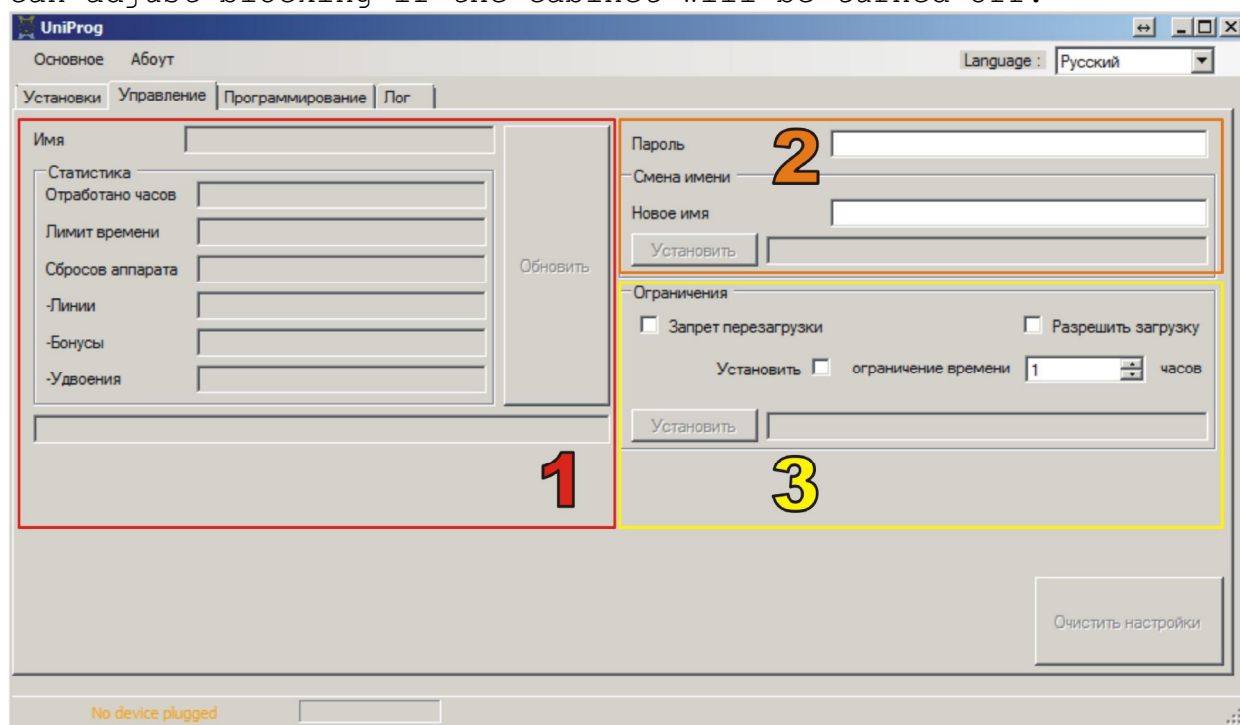
Block «1» из «3» bonus combo out.

Block all "five in line combo" «CHECKED» 4 in line « EMPTY »

Maximum doubling in row «5»

## Page Control

Here you can make settings for rental use the cabinets. Also you can adjust blocking if the cabinet will be turned off.



There are 3 blocks of settings

1. In first block you can see all logs for cabinet working time with PS. When push Refresh button - you can read all logs from PS.

Logs:

**Worked hours** - what time cabinet works (in hours).

**Remain hours** - what time left for rent end.

**Reset counts** - restart cabinet counter.

**-Lines** - counter of blocked combinations.

**-Bonuses** - counter of blocked bonus wins.

**-Double** - counter of blocked double.

2. Second block - for authorization. Set it if you want to use settings from point 3.

You need to enter your pass if you have registered user, or create new user, typing New name and your own pass.

**Attention!!!** When you forgot the pass, one way to restore full control - press button Clear control settings. All PS data will be cleared too.

3. Block of Limits. It make forbid the restart cabinet. After restart it block the screen. To unblock you need to authorize the PS and allow starting.

**Attention!!!** This limit can be unblocked only with user who set it. If you forgot the pass and username - one way to start the cabinet - clear all with making init.

## Page Log

It shows logs of procedures under selectors

